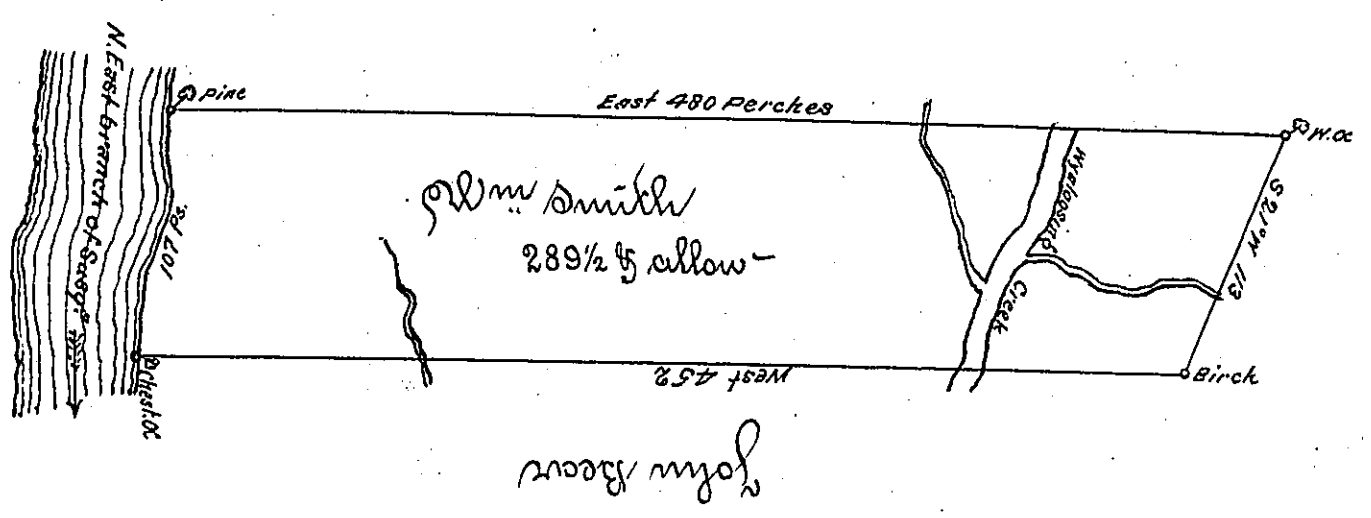


See
ct 5-235



A Draught of a Tract of land called *W. Smith* situate on *W. Smiths Creek* about
 a mile and a half from the mouth of on the Easterly side of the North East branch
 of Susquehanna River in the County of Northumberland containing two hundred &
 eighty nine acres & a half acre besides the usual allowance of 6% Cent for Roads &c
 Surveyed the 15th day of September 1773 for *William Smith* in Pursuance of an Order
 Dated the 3^d Day of April 1769 Number 1049

By *John Cukens Esq*
 Survey Genl

By *Chas Stewart Dep Sur*

IN TESTIMONY that the above is a copy of the original remaining on file in the
 Department of Internal Affairs of Pennsylvania, made con-
 formably to an Act of Assembly approved the 16th day of
 February, 1833, I have hereunto set my Hand and caused
 the Seal of said Department to be affixed at Harrisburg, this
 _____ day of _____ 1895.

Geo. P. Brown
 Secretary of Internal Affairs.